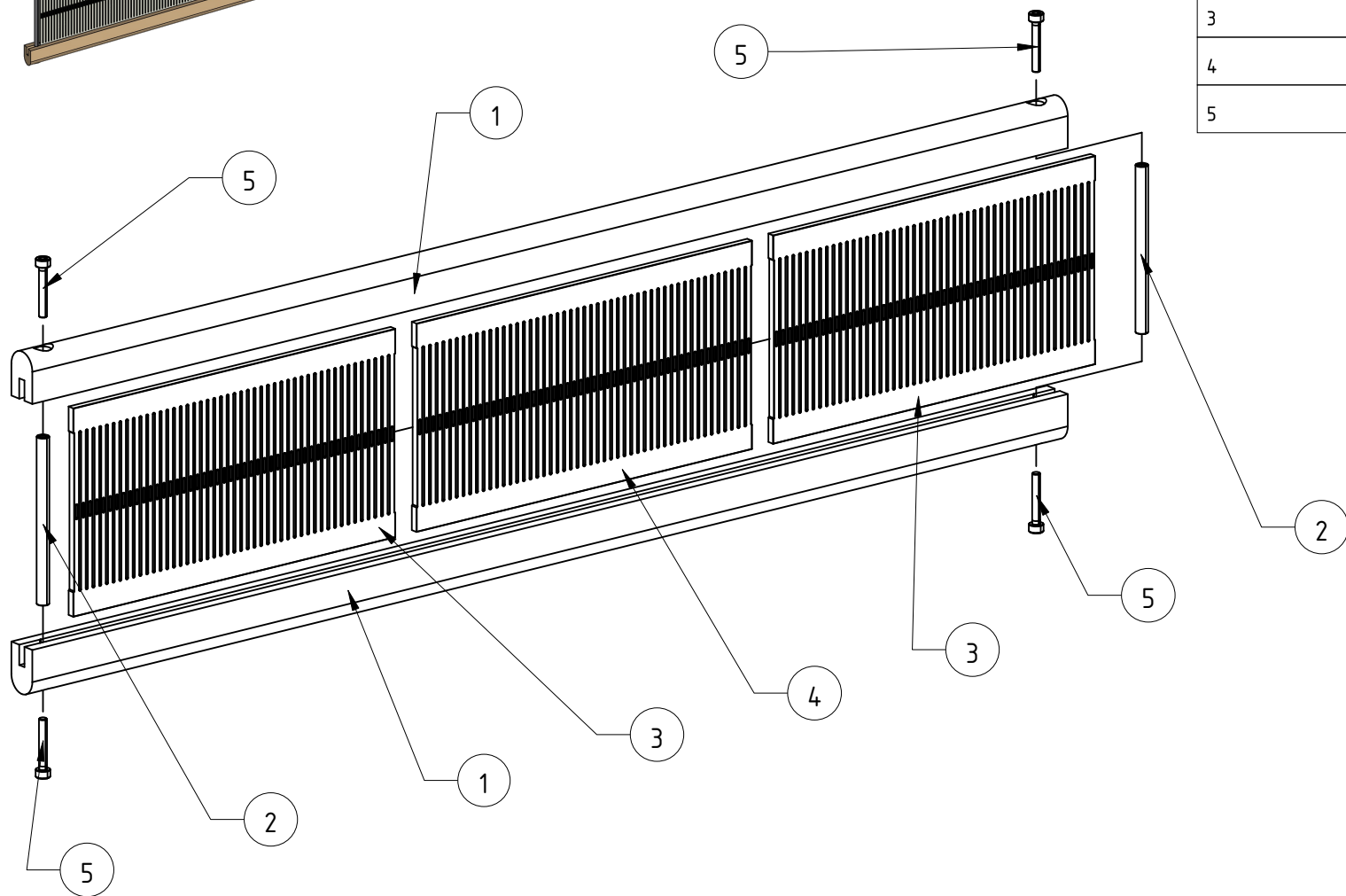
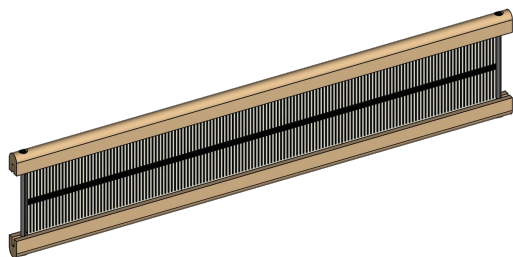


1

2

3

4



## Bill of Materials

No.	Description	Qty
1	Heddle Rail	2
2	Spacer Tube	2
3	Reed Set 150mm	2
4	Reed Set 160mm	1
5	M3x20mm SHCS	4



adn2.ca

Drawn by  
A. Neufeld

Title

Rigid Heddle Assembly

Approved by  
A. NeufeldMaterial  
Various

Rev.	Date of issue	Units	Sheet
1	2022-05-27	mm	1/1

1

2

3

4

A

B

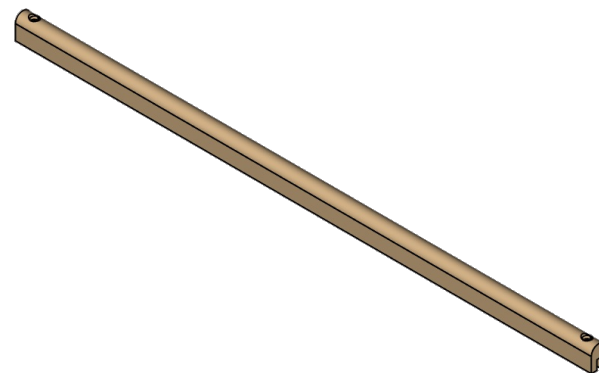
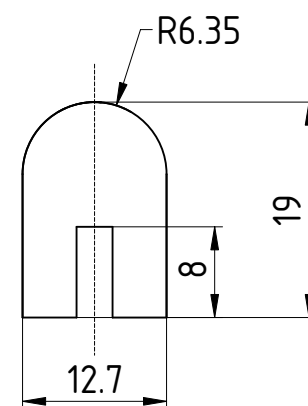
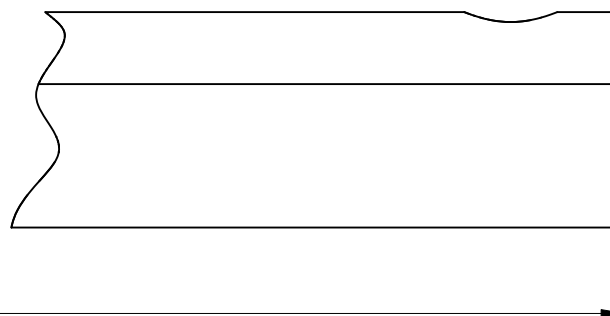
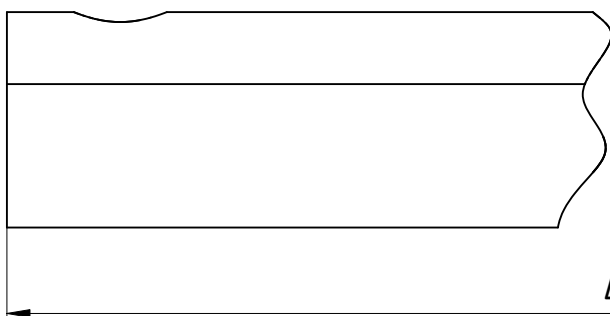
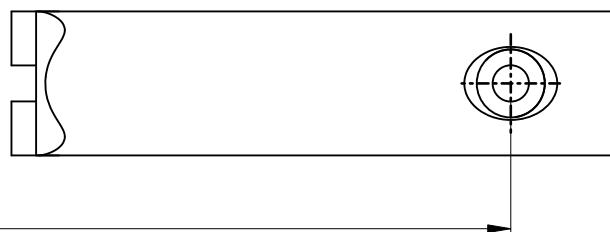
C

D

Ø3.2 THRU

└┐Ø6.0 ▴3.4

√Ø 8.2 X 90°



adn2.ca

Drawn by  
A. Neufeld

Title

Rigid Heddle Rail

Approved by  
A. NeufeldMaterial  
Hard Maple

Rev.	Date of issue	Units	Sheet
1	2022-05-27	mm	1/1

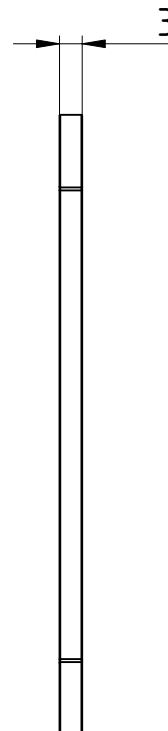
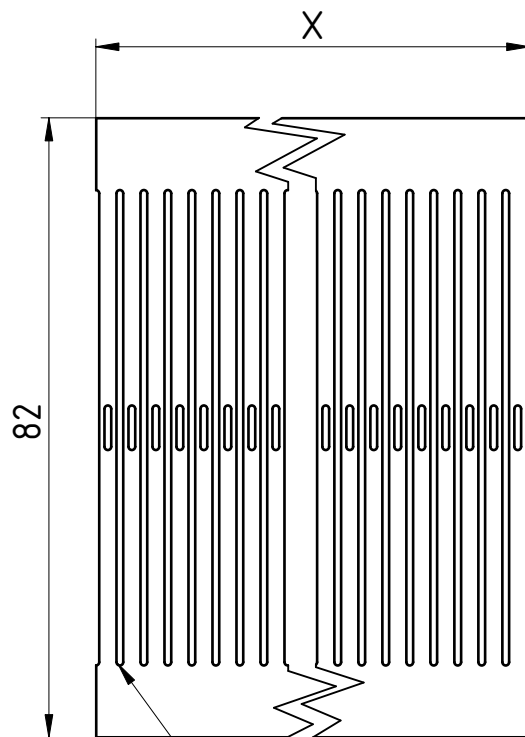
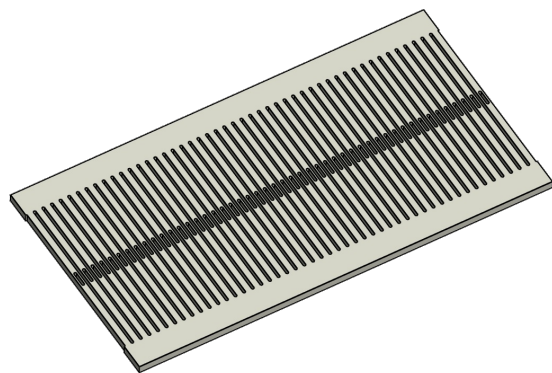
1

2

3

4

Configuration	X
150mm Nominal	152.40
160mm Nominal	158.75



## Notes:

- FDM 3D-print w. 0.4mm nozzle @ 0.2mm layer height
- Deburr all sharp edges



adn2.ca

Drawn by  
A. Neufeld

Title

Rigid Heddle Reed Insert

Approved by  
A. NeufeldMaterial  
ABS Plastic. Natural

Rev.	Date of issue	Units	Sheet
1	2022-05-27	mm	1/1

1

2

3

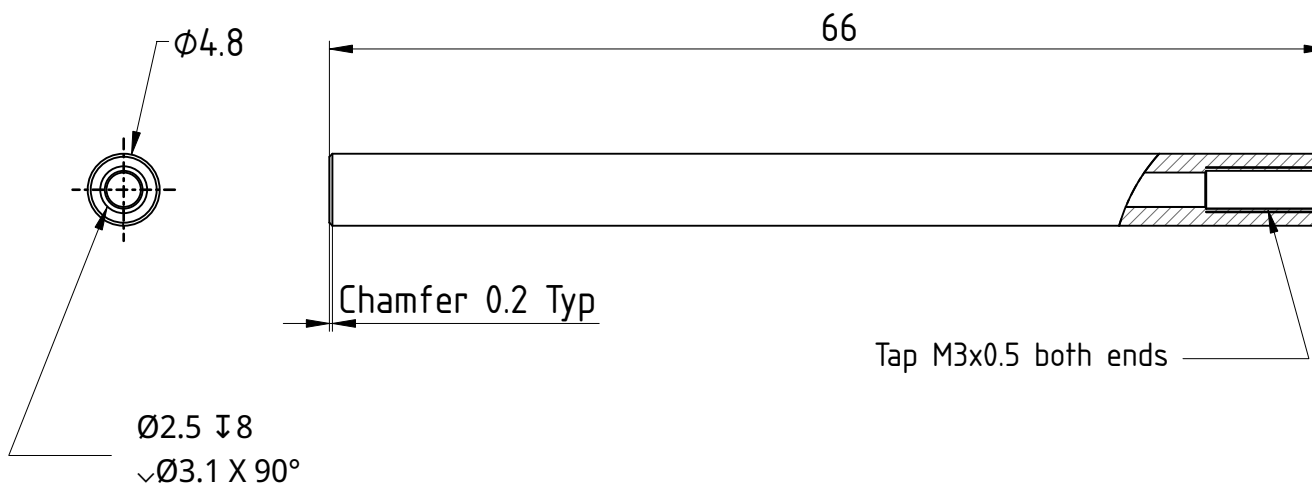
4

A

B

C

D



## Notes:

Use Round Aluminum Tube: 3/16" OD x 0.049" Wall

Supplier ksmetals.com



adn2.ca

Drawn by  
A. Neufeld

Title

Rigid Heddle Threaded Spacer

Approved by  
A. NeufeldMaterial  
Aluminum 6061-T6

Rev.	Date of issue	Units	Sheet
1	2022-05-28	mm	1/1